

## Fall 2007 Student Profile

### Based upon First Census Data

#### November 2007

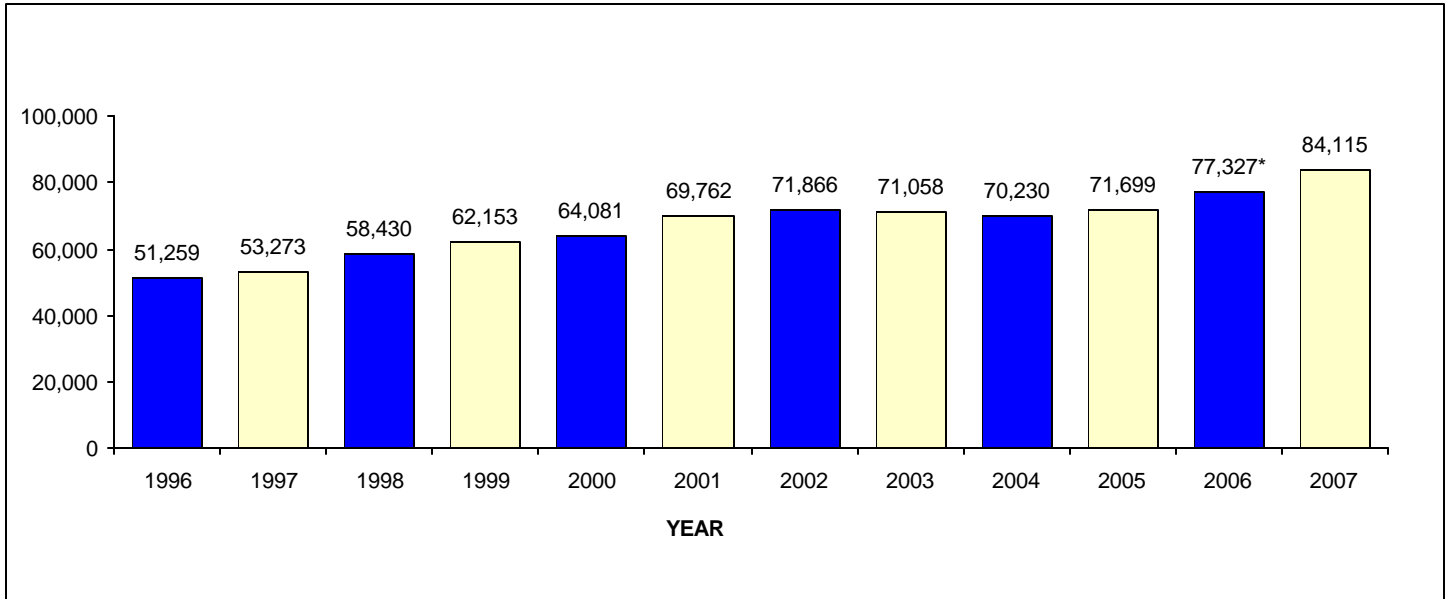
This is the eighteenth in a series of Los Rios Community College District (LRCCD) Fall Student Profiles. These annual summaries provide the District and its colleges — American River College (ARC), Cosumnes River College (CRC), Folsom Lake College (FLC) and Sacramento City College (SCC) — with data on student demographics and enrollment trends, important information for successful planning to meet the needs of our changing student clientele. The Fall 2007 Student Profile includes analysis of the separate demographic data for the newest Los Rios college, Folsom Lake College, accredited in January 2004. This report presents student enrollment data and Weekly Student Contact Hours (WSCH) based on official Fall First Census reports that are issued at the beginning of the fourth week of classes. It is also based upon demographic data generated from the official Fall Fourth Week Census research data warehouse. Analysis of demographic data includes all students enrolled as of the fourth week of classes, including those enrolled in sessions that begin later in the semester. Analysis of student demography is based upon data that *excludes* those students who have dropped all of their courses by first census.

### District Enrollment

Chart 1 presents fall district enrollment data for the Los Rios Community College District. The enrollment pattern tends to reflect variations in state funding and population trends. After several years of subtle enrollment declines due to fee increases, enrollment has increased an average of 5.6% from Fall 1996 through Fall 2002. LRCCD saw peak annual growth rates of 9.7% in Fall 1998 and 8.9% in Fall 2001. Enrollment reached its highest point, 71,866, with a smaller annual growth of 3.0% in Fall 2002. However, enrollment decreased by 1.1% to 71,058 in Fall 2003, which was followed by a 1.2% enrollment decrease in Fall 2004, to 70,230. The Fall 2003 enrollment decrease reflects the reduction in course offerings at our colleges, necessitated by state budget cuts, even though demand for our courses remained high as the population of Greater Sacramento continues to grow. In addition, the decreases might be partially attributed to the impact of increases in enrollment fees, from \$11 to \$18 per unit in Fall 2003 and from \$18 to \$26 per unit in Fall 2004.

In Fall 2005, enrollment increased by 2.1%, with 71,699 students enrolling in Los Rios colleges, followed by a 7.8% increase in Fall 2006, to 77,327. The Fall 2007 enrollment at Los Rios colleges of 84,115 students reflects an 8.8% increase over the previous Fall 2006 semester. District-wide, the Los Rios colleges implemented a compressed calendar which might partially explain the enrollment increases at each of the colleges as the shortened semester may be a greater appeal to students. The enrollment increases at each of the Los Rios Colleges in Fall 2007 were: by 7.1% at ARC (to 36,545), by 9.0% at CRC (to 13,688), by 15.2% at FLC (to 8,562) and by 9.1% at SCC (to 25,320).

**Chart 1: LRCCD Enrollment: Fall 1996 to Fall 2007**



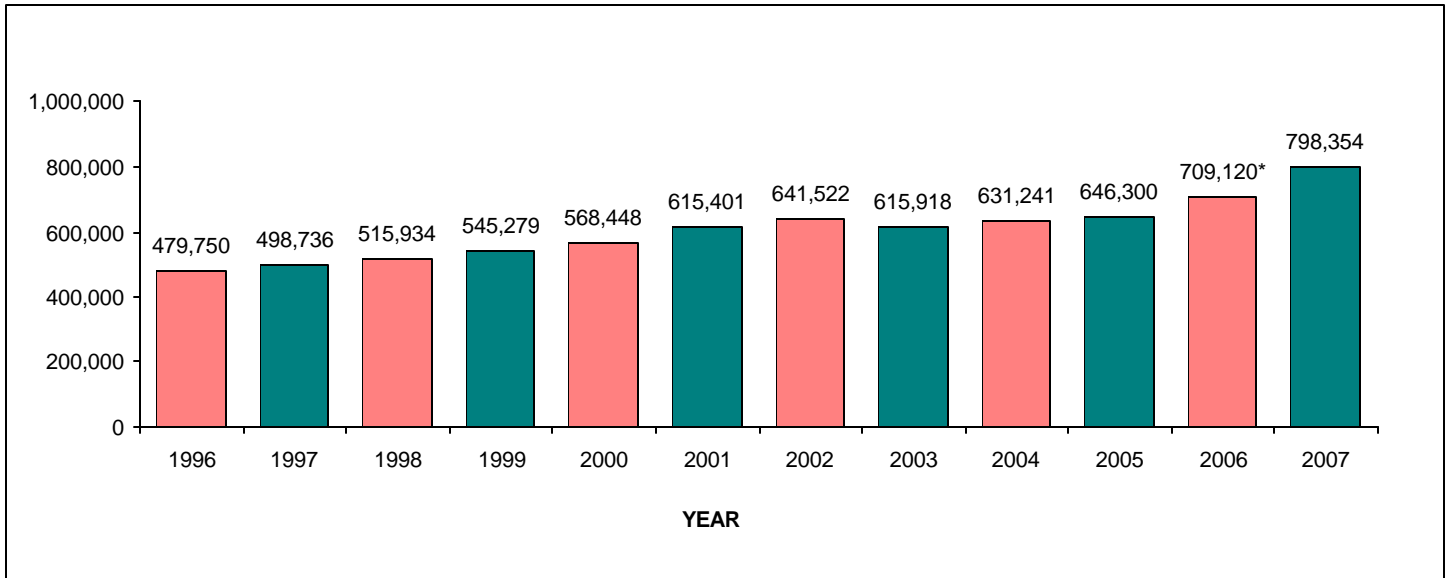
**Technical Note:**

\* Data revisions of the previous Fall figures occur after the completion of the academic year, when official Census data for the year are adjusted. Fall 2002 reflects the beginning of reporting from the PeopleSoft SA System.

## District Weekly Student Contact Hours

Weekly Student Contact Hours (WSCH) for Fall 2007, based on data extracted from the PeopleSoft SA system, were 798,354 across the district. The fourth week WSCH to enrollment ratio was 9.67 for Fall 2007, a slight increase from the 9.29 from last Fall. The increase in WSCH to enrollment ratio can be attributed to the increase in the *number* of students taking full course loads, especially at Folsom Lake and Cosumnes River Colleges. The *number* of FLC students taking 12 or more units increased by 12.3% from Fall 2006 to Fall 2007, while those students taking full course loads at CRC increased by 6.1% over this same one year time period.

**Chart 2: LRCCD WSCH: Fall 1996 to Fall 2007**



**Technical Notes:**

\* Data revisions of the previous Fall figures occur after the completion of the academic year, when official Census data for the year are adjusted. Fall 2002 reflects the beginning of reporting from the PeopleSoft SA System.

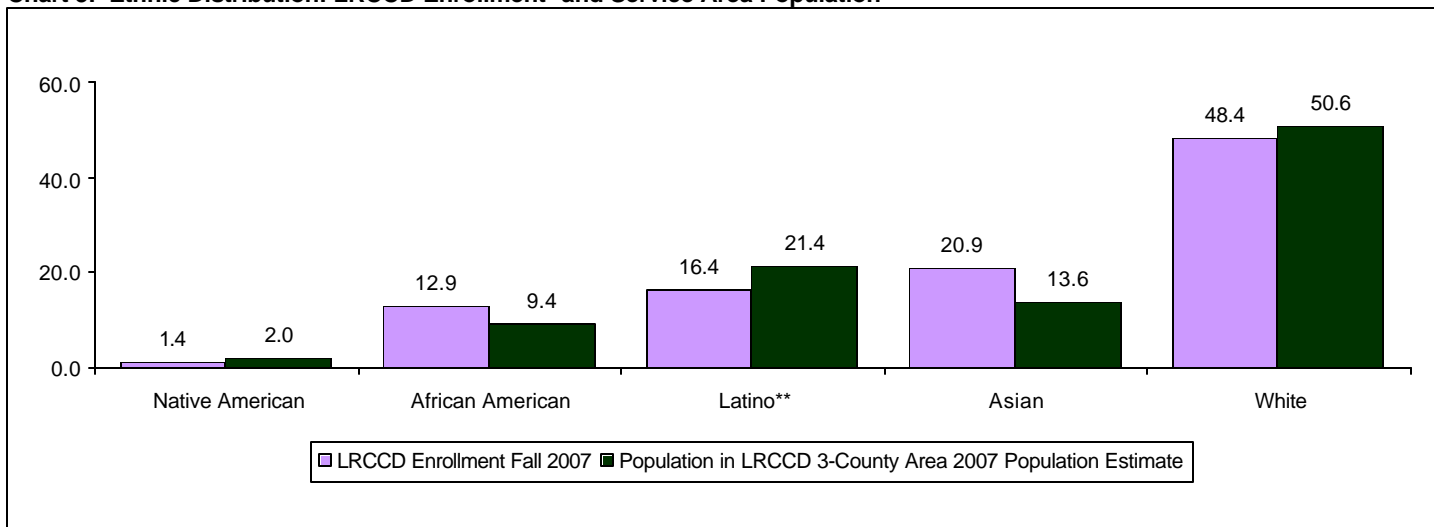
WSCH increased at a higher rate, by 19.7%, at Folsom Lake College, the newest Los Rios College from Fall 2006 to Fall 2007. The increase reflects the ongoing transformation from a center to a college, with the opening of

new facilities in Fall 2005 that allowed for expansion of course offerings at the new college. In Spring 2007, an additional 79,000 square feet of instructional and office space opened, providing FLC students the opportunity to take higher unit loads, as reflected in the WSCH increase in Fall 2007.

## District Enrollment by Ethnicity

Chart 3 depicts the District's ethnic composition in Fall 2007 compared to the 2007 population estimates of its three-county service area. This comparison shows that Los Rios enrolls higher proportions of Asian and African American students and lower proportions of white, Latino and Native American (noting the small numbers) students than each group's proportion of the population.

**Chart 3: Ethnic Distribution: LRCCD Enrollment\* and Service Area Population**



### Technical Notes:

\* Census data by Race includes a category called "multi-race". LRCCD data has no such classification. LRCCD has a category called "other and decline to state". Census data has no such classification. As such, *both* have been eliminated from the analysis.

\*\* Latino data from the U.S. Census overlaps other ethnic categories; hence percentages do not total 100.0%.

### Source for Service Area Population:

State of California, Department of Finance, Race/Ethnic Population with Age and Sex Detail, 2000–2050. Sacramento, CA, July 2007.

The 20.9% of Asian students (which includes Filipinos and Pacific Islanders) in Fall 2007 continues to be the largest minority group enrolled in Los Rios colleges. The remaining ethnic composition of the District's Fall 2007 enrollment is as follows: Latinos, 16.4%; African Americans, 12.9%; and Native Americans, 1.4%. There continues to be a decline in the proportion of total enrollment by white students at Los Rios colleges, decreasing from 49.4% in Fall 2006 to 48.4% in Fall 2007.

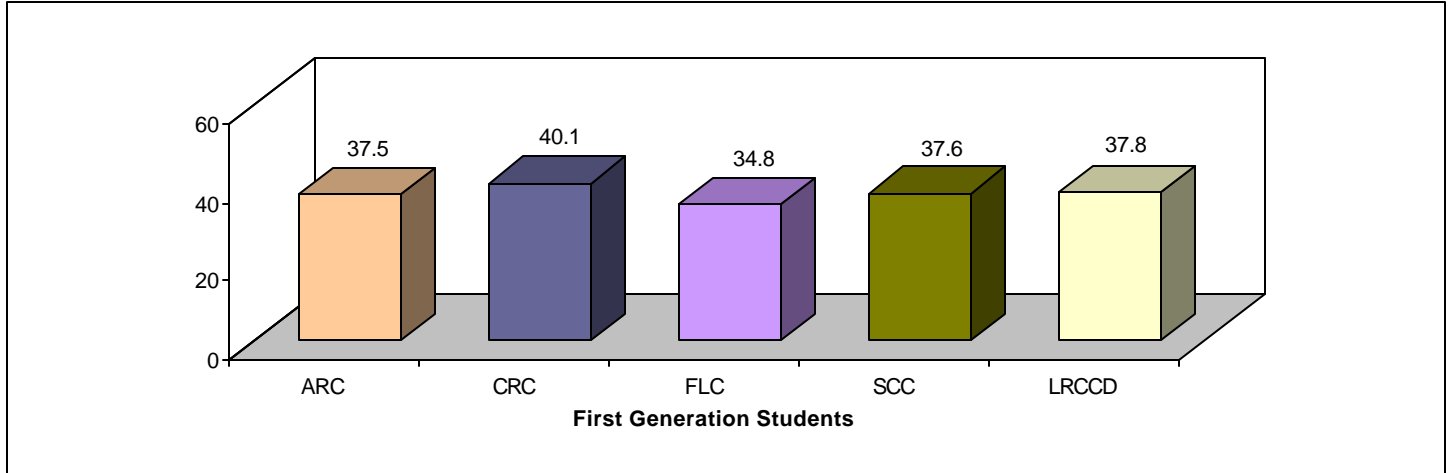
There are some interesting differences in Fall 2007 enrollment based on ethnicity at the college level. CRC continues to enroll the highest proportions of Asian students (33.4%) across the district. CRC also enrolls higher proportions of African Americans (16.1%) and fairly equivalent proportions of Latinos (17.1%) when compared to District enrollment proportions. However, SCC enrolled the highest proportions of Latinos (19.1%) and African Americans (16.8%) throughout the district in Fall 2007 and also enrolls a higher proportion of Asians (26.7%) than district enrollment proportions. ARC enrollment based on ethnicity when compared to District proportions shows a lower proportion in each of the ethnic categories except Native Americans (noting the small numbers) of which similar proportions enroll and a higher proportion of white student enrollment (56.9%), although the proportion of all students who are white at ARC has decreased from 58.1% in Fall 2006.

Analysis of Folsom Lake College's Fall 2007 ethnicity profile results in a much different enrollment pattern. There is a substantially higher proportion of white students, 75.1%, enrolled at Folsom Lake College in Fall 2007 and lower proportions in each of the other ethnic categories.

## Enrollment by First Generation College Students

The Fall Profile 2007 includes valuable information on those students enrolling in Los Rios Colleges who are first generation students, those who are the first in their families to pursue a college education. The proportion of those students who have enrolled in Los Rios Colleges that are first generation students is 37.8% district-wide in Fall 2007, which is slightly higher than the 37.3% in Fall 2006.

**Chart 4: LRCCD Enrollment by First Generation\* Students: Fall 2007**



\* Defined as those students whose parents have a high school education or less.

CRC has the highest proportion of first generation students with 40.1% of all students enrolled, followed by the 37.6% of SCC students and 37.5% of ARC students in Fall 2007 who are first generation students. FLC enrolls the lowest proportion, 34.8%, of first generation students of all the Los Rios Colleges. With high proportions of Los Rios students who are first generation college going students at each of the colleges, it is important the colleges provide this student population with the student services they need to ensure they succeed.

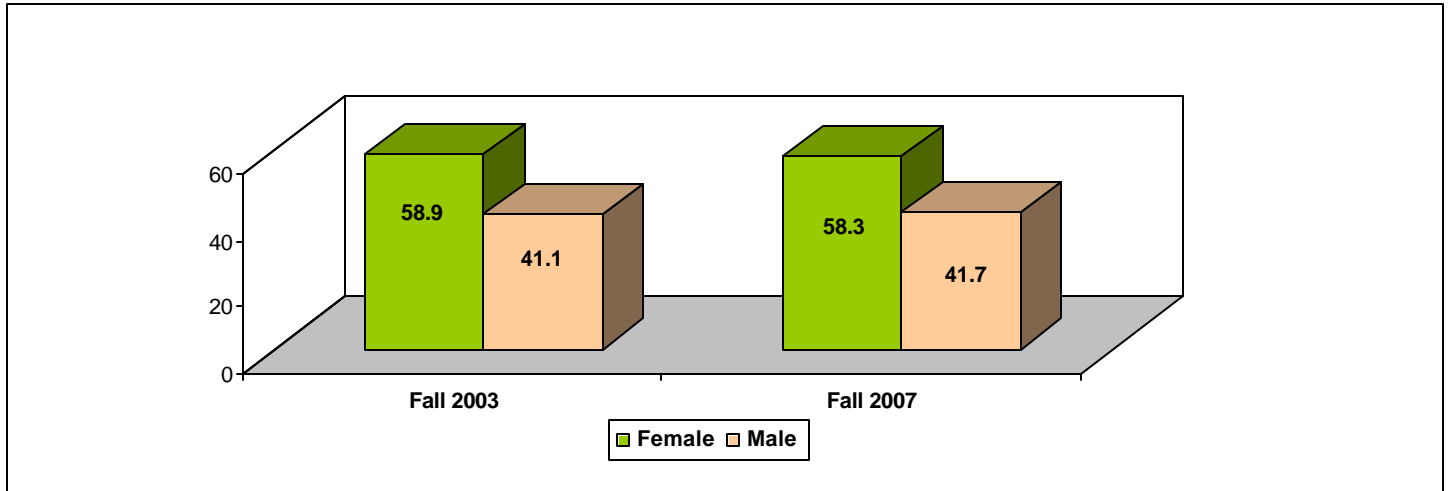
## Enrollment by Primary Language Spoken

Although English is the primary language of 81.1% of LRCCD students, many students attending our colleges indicate a diverse number of primary languages spoken other than English, with 18.9% indicating they speak a primary language other than English. District-wide, 3.4% of students indicated Spanish as their primary language, however a higher 4.1% of CRC students and 4.0% of SCC students speak Spanish as their primary language. Likewise, 5.2% of students across the district speak a primary language from one of the former Eastern Block countries, with a higher proportion of ARC students, 8.8%, indicating this is so (students who indicated they speak Romanian, Russian, Serbo-Croatian, Czechoslovakian, Hungarian, Polish, Slovak, Lithuanian or Ukrainian). Of additional interest are the 3.7% of Folsom Lake College students, many who probably enroll in courses at FLC's Rancho Cordova Center, who indicated their primary language was from one of the former Eastern Block countries in Fall 2007. Smaller proportions of students district-wide (1.8%) indicated one of the Chinese languages was their primary language in Fall 2007. However, 3.4% of students at SCC and 2.7% of CRC students indicated a primary language as one of the Chinese dialects. Of additional interest is the 1.5% of new students who speak Vietnamese district-wide and the higher 3.7% of CRC students who indicated their primary language was Vietnamese in Fall 2007.

## District Enrollment by Gender

Historically, there has been very little change in the proportions of men and women enrolled at Los Rios colleges, fluctuating only slightly between fall semesters. Chart 5 illustrates this fact; as district enrollment by gender in Fall 2007 generally mirrors that of Fall 2003.

**Chart 5: LRCCD Enrollment by Gender: Fall 2003 and Fall 2007**



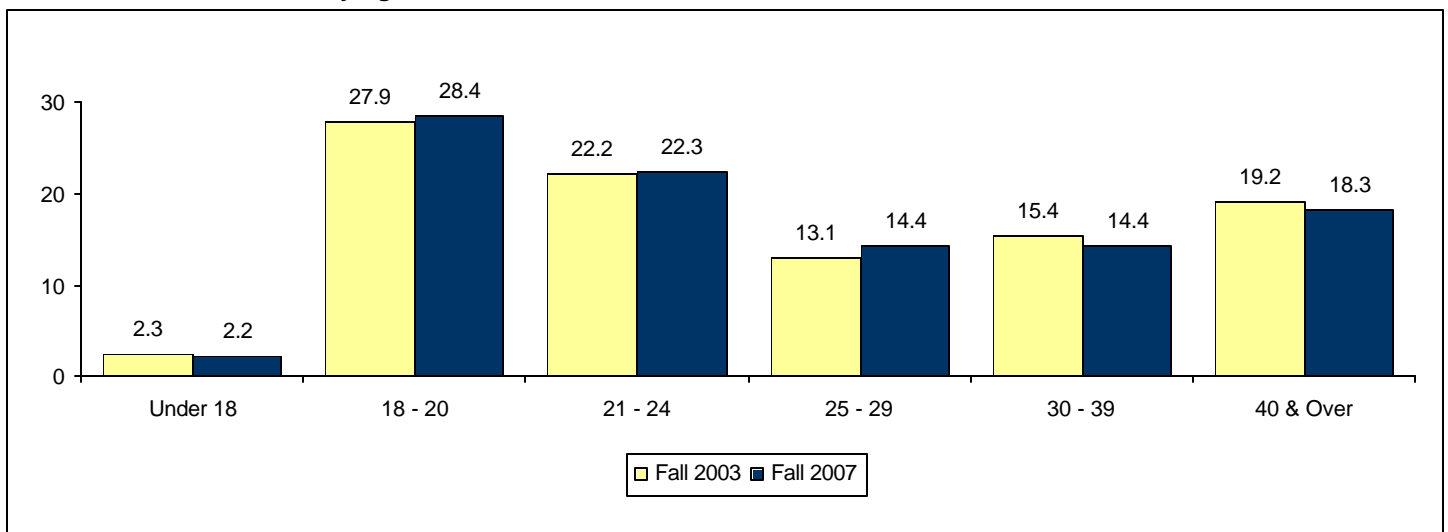
The enrollment pattern by gender among the Los Rios colleges generally mirrors that of the District. The one distinction is the higher proportion of females enrolled at Folsom Lake College (62.9%) compared to the 58.3% district-wide in Fall 2007.

Fall 2007 District ethnic enrollment by gender illustrates differing enrollment patterns within several ethnic categories. African American enrollment by gender has a higher proportion of female students (62.6%) than males (37.4%) compared to district proportions. The proportion of female African American students at the colleges generally mirrors district proportions except at CRC where the 64.9% proportion of female African American students is slightly higher than comparable district proportions and at FLC, where 64.6% of African American students are female. Asian female students across the district enroll in slightly lower proportions (56.5%) than their male counterparts, when compared to district-wide proportions. However, at FLC higher proportions (65.2%) of female Asian students enrolled in Fall 2007 than did for the district overall. District-wide, the proportion of female Latino enrollment is 56.4%, however Latino enrollment reflects higher proportions of females enrolled at FLC (60.2%), SCC (59.9%) and at CRC (59.1%) while females enrolled in lower proportions (52.0%) at ARC in Fall 2007.

## District Enrollment by Age Group

Chart 6 illustrates that LRCCD enrollment proportions by age group remained relatively unchanged from Fall 2003 to Fall 2007. The largest proportion of LRCCD enrollment continues to be the 28.4% of students ages 18-20, followed by the 22.3% who are between the ages of 21-24 in Fall 2007.

**Chart 6: LRCCD Enrollment by Age: Fall 2003 and Fall 2007**



There are some differences in college enrollment patterns by age when compared to the district enrollment pattern. CRC enrolls higher proportions, 33.7%, of students 18-20 years of age when compared to Fall 2007 district enrollment. Higher proportions, 33.0%, of FLC students are now 18-20 years of age in Fall 2007 compared to the 28.4% district wide, illustrating a continuing trend towards a slightly younger student population at the newest Los Rios college. ARC enrolls slightly lower proportions of younger students between the ages of 18-20, 24.0%, compared to Fall 2007 district-wide proportions. Enrollment proportions by age at SCC generally reflect district proportions. The average age of a Los Rios student is 28.7, which is relatively unchanged from Fall 2006. The 29.2 average age of a FLC student in Fall 2007 reflects the tendency of older students to enroll at the college, yet it is important to note that the Fall 2007 average age is lower than the 31.6 from Fall 2003, again illustrating a trend towards a slightly younger student population at FLC who tend to take higher course loads.

## District Enrollment by Day and Evening Attendance

Chart 7 compares the District proportions of day and evening attendance for Fall 2003 and Fall 2007. Figures illustrate that higher proportions of students, 43.9%, take courses offered only during the day, while 25.6% take courses offered during *both* the day and evening. The proportion of students who take courses offered only during the evening was 22.9% in Fall 2007. It is of interest to note the increase in the proportion of students taking courses that have class times that are considered “unknown”, increasing from 4.6% in Fall 2003 to 7.6% in Fall 2007. Classes categorized as “unknown” include courses in areas such as distance education or those courses that have no regular class meeting times and as the chart illustrates, classes in these areas are on the increase as students chose the more non-traditional course offerings in increasing proportions across the district.

**Chart 7: LRCCD Enrollment by Day and Evening: Fall 2003 and Fall 2007**

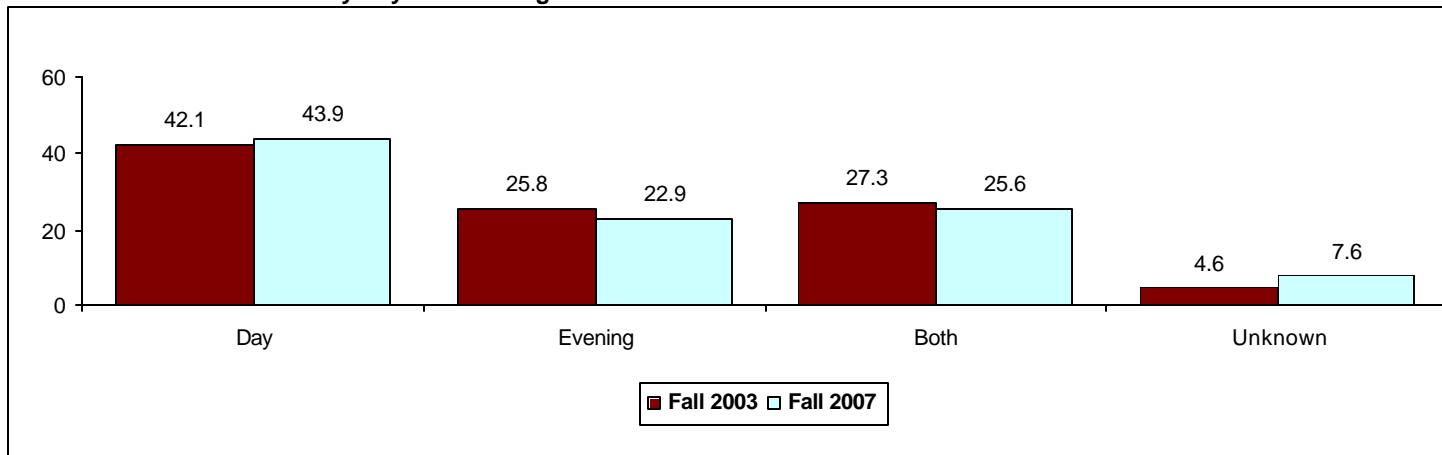


Table 1 summarizes day and evening attendance patterns by college for Fall 2007. The proportion of students attending classes only during the day is higher at both CRC and SCC, while the proportion of ARC students attending classes only during the day is slightly less than district proportions. Slightly higher proportions of ARC students attend courses offered only during the evening, while slightly lower proportions attend courses offered *both* during the day and evening than comparable students district-wide. Fall 2007 students at both CRC and SCC enrolled in courses offered in *both* day and evening in lower proportions than those district-wide. In addition, SCC’s proportional enrollment of students taking evening only courses is lower than district-wide proportions for Fall 2007.

It is worth noting that higher proportions of students at both ARC and CRC enroll in courses in which the class time is “unknown” than students district-wide. This is indicative of more classes offered via distance education as well as apprenticeship course offerings at these two Los Rios colleges.

**Table 1: Day and Evening Attendance: Fall 2007**

	<b>Day Only</b>	<b>Evening Only</b>	<b>Both Day and Evening</b>	<b>Unknown</b>
<b>ARC</b>	40.3	24.7	23.5	11.5
<b>CRC</b>	48.8	21.5	19.2	10.4
<b>FLC</b>	35.3	29.5	27.9	7.3
<b>SCC</b>	49.9	20.9	23.6	5.6
<b>LRCCD</b>	43.9	22.9	25.6	7.6

**Technical Note:**

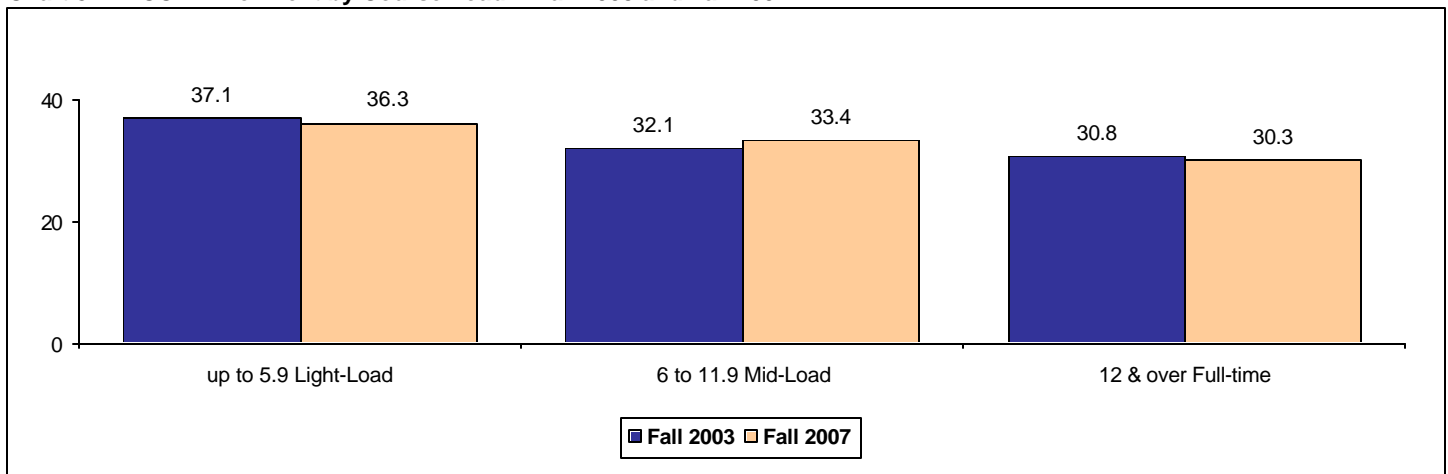
LRCCD proportions vary because they reflect unduplicate students across the district, which account for the higher proportions of day/evening students compared to the colleges.

Enrollment patterns by day and evening attendance at Folsom Lake College vary from the District overall, however there are some shifts in the attendance patterns at the newest Los Rios college. The proportion of Folsom Lake students enrolled in courses offered during the day is a lower 35.3% while the proportion of FLC students enrolled in courses offered only during the evening is a higher 29.5% when compared to enrollment district-wide. However, the 35.3% of students enrolled in courses offered during the day only at FLC is higher than the 27.3% who did so in Fall 2003, illustrating a shift in enrollment patterns as FLC continues to build facilities and offer more courses during the day. Likewise, the 29.5% of FLC students taking courses only offered in the evening is much lower than the 38.6% who did so in Fall 2003, again illustrating the shift of FLC from a center to a college.

**Unit Load by District Students**

Three categories of unit load are illustrated in Chart 8 to demonstrate trends in students' course loads in Fall 2003 and Fall 2007. "Light-load" students are those taking fewer than six units; "mid-load" students are those taking six to 11.9 units; and "full-time" students are those with 12 or more units. It remains clear that all of the colleges are still predominantly part-time institutions, with 69.7% of students taking 11.9 units or less in Fall 2007. The proportions of students taking "full" course loads remained relatively unchanged decreasing slightly from 30.8% in Fall 2003 to 30.3% in Fall 2007.

**Chart 8: LRCCD Enrollment by Course Load\*: Fall 2003 and Fall 2007**



\* Students in those courses for 0 units have been excluded.

Cosumnes River College continues to have the highest proportion, 34.8% of full-time students, which is just slightly lower from the 34.4% in Fall 2003. The 31.9% proportion of SCC students who were full-time in Fall 2007 was also lower than the 33.2% in the Fall 2003 semester. The proportion of full-time ARC students of 28.9% in Fall 2007 was also lower than the 30.0% of full-time enrollment in Fall 2003. ARC, CRC and SCC students enrolled similar proportions of students taking six to 11.9 units in Fall 2007, and generally each of these three colleges' enrollment proportions mirrors the 33.4% of mid-load student enrollment district-wide, with CRC and

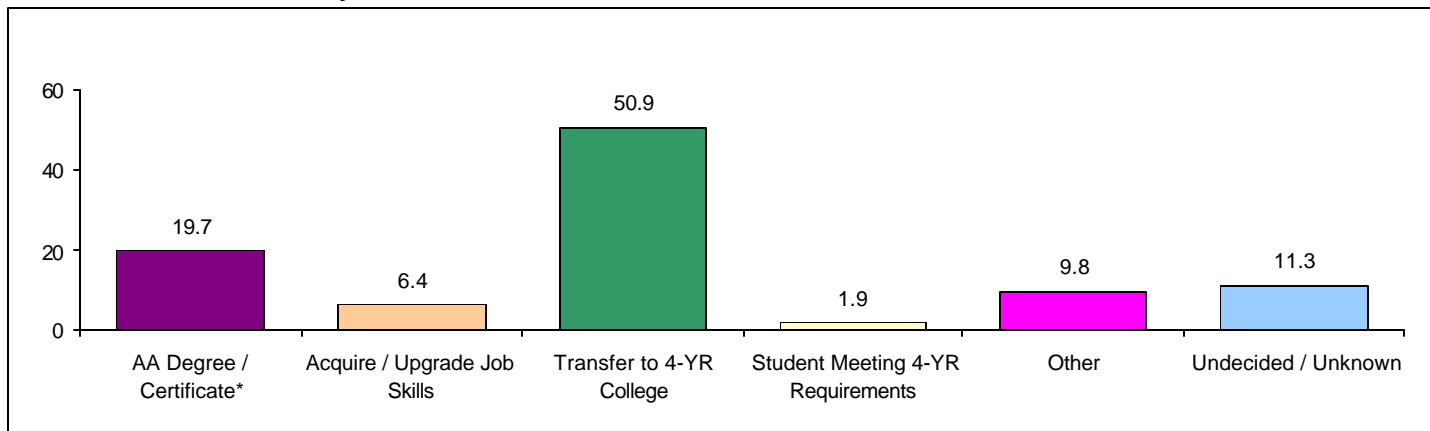
ARC slightly higher, at 35.3% and 34.5%, respectively. CRC enrolled lower proportions, 30.0%, of students taking light-loads as compared to the 36.3% light-load enrollment district-wide in Fall 2007. The proportions of ARC students taking light-loads, 36.6%, is higher than district enrollment and can be partially attributed to the Public Safety Center which is housed at ARC. Public Safety Center students typically take one or two technical training or in-service courses rather than full course loads. The proportion of SCC students, 33.6%, taking light-loads in Fall 2007 is also slightly lower than comparable district proportions.

Enrollment proportions by course load are also beginning to shift at Folsom Lake College as would be expected as new facilities open and more course offerings are available to students. The 31.3% of FLC students taking 12 units or more is slightly higher than the 30.3 % who did so district-wide in Fall 2007. But of more importance, is the proportion of Fall 2007 full-time student enrollment at FLC is substantially higher than the 25.1% who took full course loads at FLC in Fall 2003. FLC does continue to enroll higher proportions, 38.6%, of students taking light loads compared to the 30.3% who did so district-wide in Fall 2007. But again, compared to the 45.8% of FLC students who took light loads in Fall 2003, there is a definite shift in the course taking patterns of FLC students as facilities continue to grow and more course offerings are available to FLC students as a result.

## District Enrollment by Educational Goal

In an effort to better understand why students attend Los Rios colleges, Chart 9 depicts the educational goals of Los Rios students for Fall 2007. Approximately one half, 50.9%, of Los Rios students enroll with the goal to transfer to a 4-year college. The proportion of students enrolled at Los Rios colleges with a goal to obtain an Associate’s Degree or Certificate is 19.7% in Fall 2007, which generally reflects the Fall 2006 proportion. Although 11.3% of students enrolled in Fall 2007 are undecided on their goal or their goal is unknown, there were 6.4% of students with a goal to acquire or upgrade job skills.

**Chart 9: LRCCD Enrollment by Educational Goal: Fall 2007**



\* Excludes those who wish to earn a degree and also transfer; these students are part of the proportion of transfer students.

The proportion of students enrolled at a Los Rios college for “other” reasons (High School/GED completion, Educational Development, Improve Basic Skills, Discover Career Interests and Maintain Certificate or License) was 9.8% in Fall 2007. For the first time in Fall 2007, we are collecting data on those students who are attending a Los Rios college who are students at a 4-year institution and are taking courses at our colleges to meet 4-year requirements. In Fall 2007, 1.9% of students district-wide were taking courses at a Los Rios college to meet requirements of their 4-year institution.

Of interest are the higher proportions of CRC (55.7%), SCC (53.3%) and FLC (52.1%) students with a goal to transfer to a 4-year college compared to equivalent district proportions. Conversely, slightly lower proportions of students enrolled at ARC have a goal to transfer to a 4-year college, 48.1%. It is important to note that this may be reflective of students enrolled at ARC to take one or two courses at the Public Safety Center which is housed at ARC. Higher proportions of ARC students enroll with an educational goal to earn an Associate’s Degree or Certificate (24.1%) than do students district-wide. Slightly higher proportions, 14.2%, of students attending FLC

have “other” types of educational goals, with 36.7% of those with a goal of “other” at Folsom Lake College indicating Educational Development as their goal.

## Summary Remarks

The data presented in the Fall 2007 Student Profile illustrates student demographics and enrollment trends of the Los Rios Community College District. Enrollment increased substantially each year from Fall 1996 through Fall 2002. The enrollment decrease in Fall 2003 reflects a reduction in course offerings at Los Rios colleges, necessitated by state budget cuts, even though demand by students for courses remains high as the population of Greater Sacramento continues to grow. The decrease in enrollment continued in Fall 2004, decreasing by a very slight 0.06%, which might partially reflect the impact of increases to enrollment fees which increased from \$11 to \$18 per unit in Fall 2003 and from \$18 to \$26 per unit in Fall 2004. In Fall 2005, enrollment in Los Rios colleges increased slightly by 2.1% to 71,699 followed by a substantial 7.8% enrollment increase to 77,327 students enrolling in Los Rios colleges in Fall 2006. Fall 2007 enrollment at the Los Rios colleges of 84,115 students reflects an 8.8% increase over the previous Fall 2006 semester. District-wide, the Los Rios colleges implemented a compressed calendar which might partially explain the enrollment growth as the shortened semester may be a greater appeal to our students.

Some long-term demographic trends remained relatively constant through Fall 2007 with the proportions by gender remaining relatively stable. Los Rios colleges continue to enroll higher proportions of Asian and African American students than each groups' population proportion in the LRCCD 3-county area which it serves. Of interest is the decrease in the proportion of white students, from 49.4% of total enrollment in Fall 2006 to 48.4% in Fall 2007, a reflection of the fact that the Los Rios colleges continue to become more ethnically diverse. Enrollment by age group remained relatively stable from Fall 2006 to Fall 2007, with the proportion of students enrolled at Los Rios colleges who are between the ages of 18 and 24 continuing to make up over half, 50.7%, of the student population. The average age of the Los Rios student is 28.7 this Fall, which remained unchanged from Fall 2006.

The Fall 2007 Student Profile includes valuable information on those students enrolling in Los Rios Colleges who are first generation students, the first in their family to pursue higher education. District-wide, 37.8% of all students who enrolled in Fall 2007 are first generation students. However, higher proportions of CRC students enrolled (40.1%) are first generation college students, followed by the 37.6% of SCC and 37.5% of ARC students in Fall 2007 who are. FLC enrolls the lowest proportion, 34.8%, of first generation students in Fall 2007. With high proportions of Los Rios students who are first generation college going students at each of the colleges, it is important the colleges provide this student population with the support services they need to ensure success.

Figures illustrate that higher proportions, 43.9%, take courses offered only during the day, while 25.6% of students take courses offered during *both* the day and the evening. Los Rios remains a predominantly part-time institution, with 36.3% of Fall 2007 students taking light course loads. Cosumnes River College has the highest proportion (34.8%) of full-time students in Fall 2007 followed by the 31.9% proportion of full-time students at SCC. The higher unit loads at both CRC and SCC are reflective of the higher proportions of younger students between 18-20 at these two Los Rios colleges, who often enroll right out of high school and tend to take higher course loads. The average units attempted is 8.66 by CRC students and 8.26 by SCC students, both of which are higher than the average 7.97 units attempted by students district-wide in Fall 2007.

A look at Folsom Lake College shows that although there are similarities with the district, there are some noteworthy differences in the student profile of this newest LRCCD college, although the FLC student profile is transitioning from that of a center to one of a full college. FLC differs in the following ways: a higher proportion of students are female; substantially higher proportions of students are white and older, 40-and-over, compared to students district-wide. However, the proportions of younger students, those 18 - 20, have increased at Folsom Lake College, from 26.6% of all students in Fall 2003 to 33.0% in Fall 2007. Likewise the average unit load of 7.89 for Fall 2007 is higher than the 7.15 in Fall 2003, which reflects both a younger student population that tends to take more units per semester as well as the growing facilities and increased course offerings available to Folsom Lake College students. The average age of the Folsom Lake College Center student is 29.2, which is slightly older than the district average of 28.7 but it does represent a trend towards a slightly younger student population

enrolling at FLC. Higher proportions, 29.5%, of FLC students take courses offered during the evening only, while a lower 35.3% take courses offered during the day only, compared to district proportions

The Fall 2007 Profile is based on unduplicate student demography generated from the Fall First Census reports that are issued at the beginning of the fourth week of classes. Also of interest related to enrollment growth and shifting demographic trends is the number of duplicate students — those students attending more than one Los Rios college. Approximately 4,000 students are enrolled in more than one Los Rios college in Fall 2007. The increase in the number of duplicate students suggests that Los Rios students continue to be mobile and are willing to travel to take the courses they need.

This report was written by Betty Glycer-Culver, Research Analyst, and is based on data generated from the LRCCD Research Database, developed and managed by Minh La, IT Analyst II for Research.

For further information, please call: 916-568-3131 or email: [irweb@losrios.edu](mailto:irweb@losrios.edu), LRCCD Office of Institutional Research (IR).

All district reports are available on the IR Web Site at: <http://irweb.losrios.edu>.

November 2007

Fall2007StudentProfile.doc